

308/30a Norfolk Road, Marion



NORFOLK
ESTATE

Established village with a close community and long list of facilities and services on offer.


Community centre


Indoor swimming pool


Equipped gym


Indoor spa


Men's shed


Billiard Table


Outdoor barbecue area


Onsite hairdressing salon

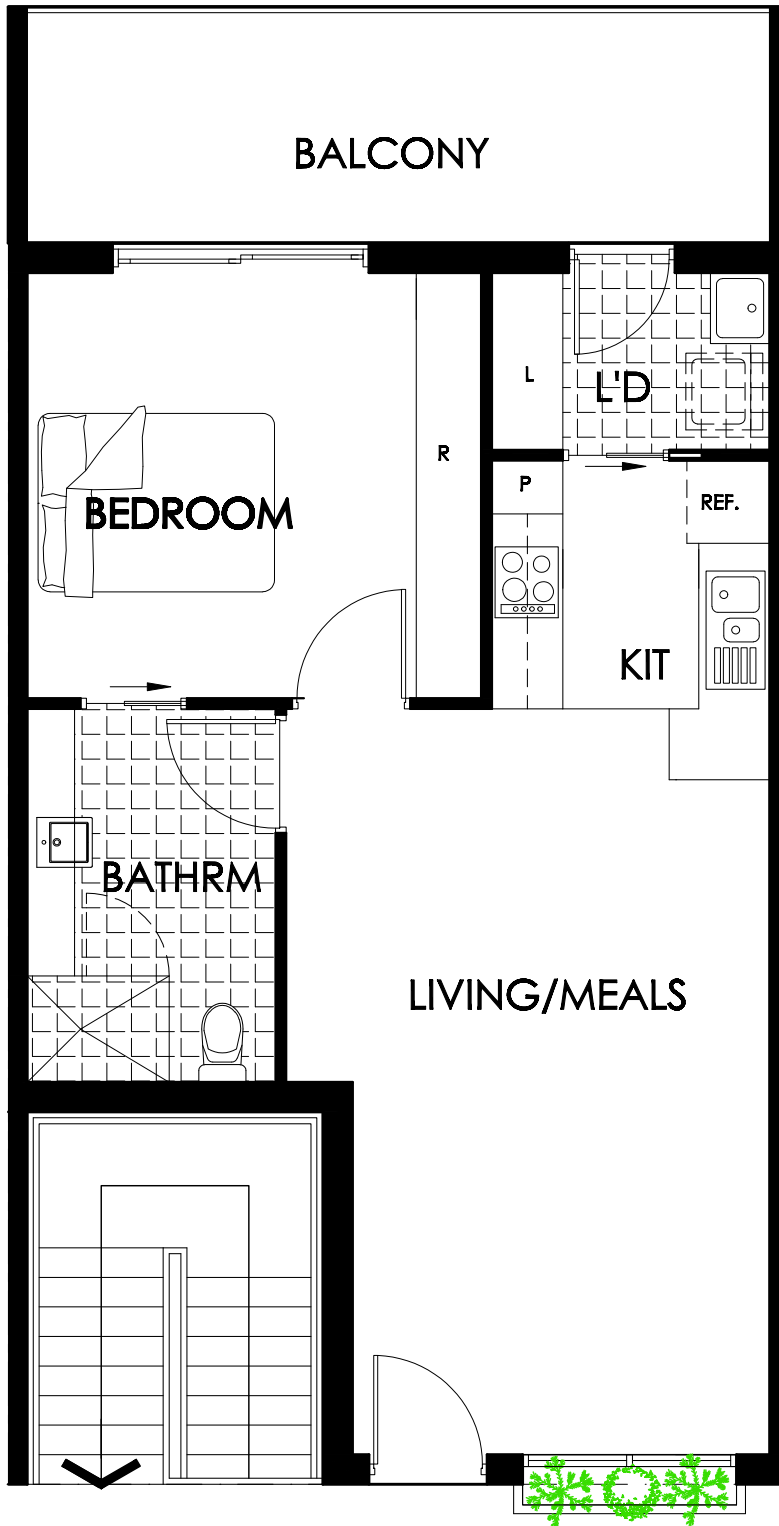

Beautifully maintained gardens


Vegetable garden



KARIDIS RETIREMENT VILLAGES
BUILDING BETTER COMMUNITIES

Call us on 1300 796 311
karidisretirementvillages.com.au



**Norfolk Apartments
Apartment 8**

Bedroom :1
 Bathrooms: 1
 Carport: 1
 Total size: 74 m²

Villa features

Open plan living area
 Walk-in-ropes
 Separate laundry
 Two-ways bathroom
 Private balcony
 Secure parking

Maintenance Fees

The current maintenance fee includes water usage, emergency services levy, insurance for public liability and buildings, management fees, public lighting, cleaning of all common areas, gardening of all common areas, general and preventative maintenance, 24 hour Emergency call monitoring, lift maintenance, onsite facilities and village management.

The maintenance fee excludes individual council rates, water rates, contents/chattels insurance, gas, electricity, private telephone, and the upkeep or replacement of all personal items (eg fridge, furniture and washing machine).

This document does not form part of a contract for sale or purchase of a license to occupy. While reasonable care has been taken in the preparation of this flier and all particulars contained herein are believed to be correct, interested parties must rely upon their own inspections and inquiries. Floorplans and photography are for presentation purposes and should be regarded as indicative only. All properties are subject to prior sale, change or withdrawal. Information, dimensions, prices and measurements are subject to change without notice. E&OE. Issued 1/5/19.



KARIDIS RETIREMENT VILLAGES
 BUILDING BETTER COMMUNITIES

Norfolk Apartments
karidisretirementvillages.com.au