







# 308 & 309/30a Norfolk Road, Marion



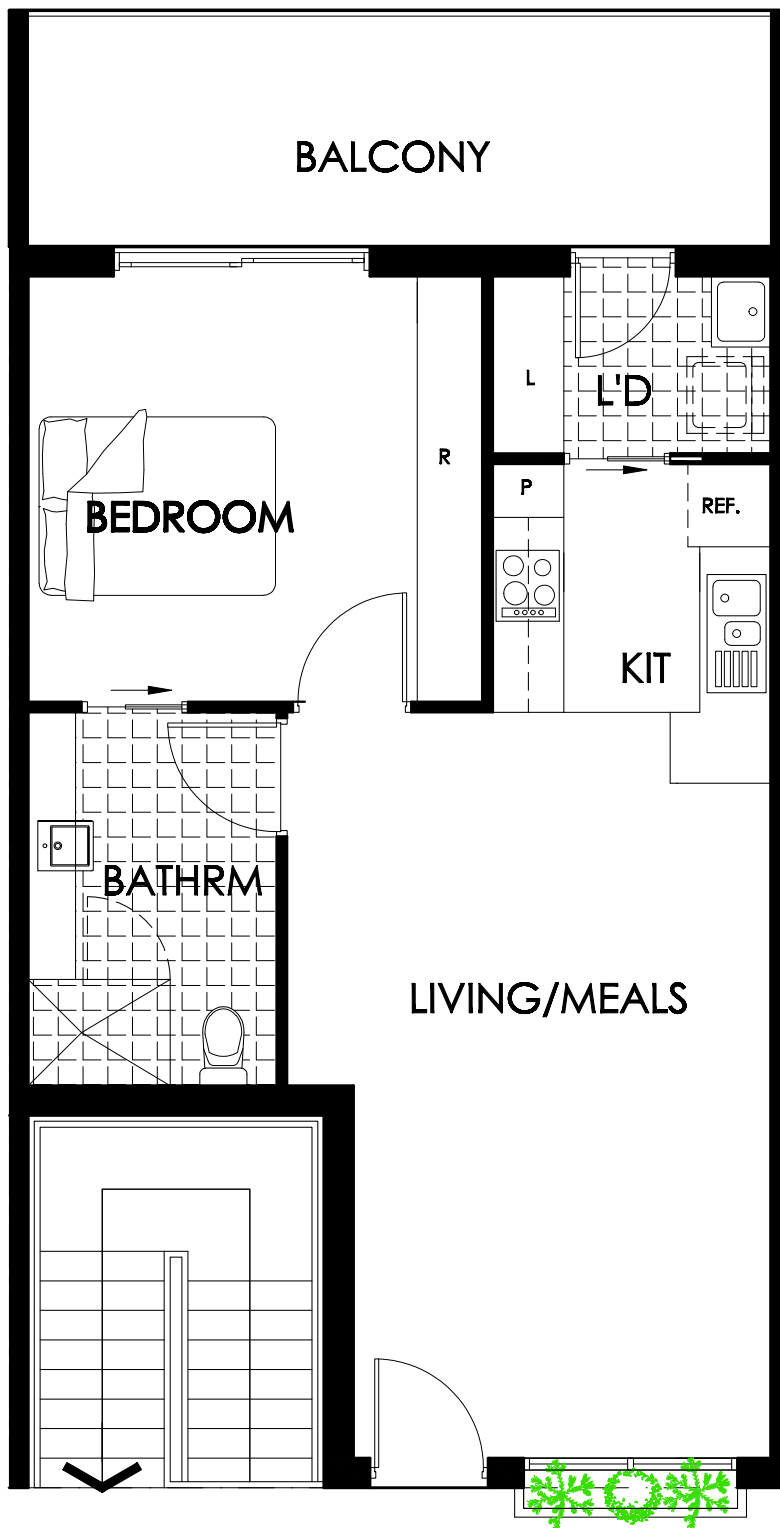
An established village with a close community spirit and an abundance of facilities and services on offer. Conveniently located close to all the key amenities you need to live a rewarding and enjoyable lifestyle.

-   
Community centre
-   
Indoor swimming pool
-   
Equipped gym
-   
Indoor spa
-   
Men's shed
-   
Billiard table
-   
Outdoor barbecue area
-   
Onsite hairdressing salon
-   
Beautifully maintained gardens
-   
Vegetable garden



**KARIDIS RETIREMENT VILLAGES**  
BUILDING BETTER COMMUNITIES

Call us on 1300 796 311  
[karidisretirementvillages.com.au](http://karidisretirementvillages.com.au)



**Norfolk Apartments  
Apartment 308 & 309**

Bedrooms: 1  
Bathrooms: 1  
Carport: 1  
Total size: 74m<sup>2</sup>

**Villa features**

Open plan living area  
Walk-in wardrobes  
Separate laundry  
Two-way bathroom  
Private balcony  
Secure parking

**Maintenance Fees**

The current maintenance fee includes council rates, water rates, emergency services levy, insurance for public liability and buildings, management fees, public lighting, cleaning of all common areas, gardening of all common areas, general and preventative maintenance, 24 hour emergency call monitoring, onsite facilities and Village Management.

The maintenance fee excludes contents/chattels insurance, gas, electricity, private telephone, and the upkeep or replacement of all personal items (eg fridge, furniture and washing machine).

This document does not form part of a contract for sale or purchase of a license to occupy. While reasonable care has been taken in the preparation of this flier and all particulars contained herein are believed to be correct, interested parties must rely upon their own inspections and inquiries. Floorplans and photography are for presentation purposes and should be regarded as indicative only. All properties are subject to prior sale, change or withdrawal. Information, dimensions, prices and measurements are subject to change without notice. E&OE. Issued 1/5/19.



**KARIDIS RETIREMENT VILLAGES**  
BUILDING BETTER COMMUNITIES

**Norfolk Apartments**  
[karidisretirementvillages.com.au](http://karidisretirementvillages.com.au)