



An established village with a close community spirit and an abundance of facilities and services on offer. Conveniently located close to all the key amenities you need to live a rewarding and enjoyable lifestyle.

- 

Community centre
- 

Indoor swimming pool
- 

Equipped gym
- 

Indoor spa
- 

Men's shed
- 

Billiard table
- 

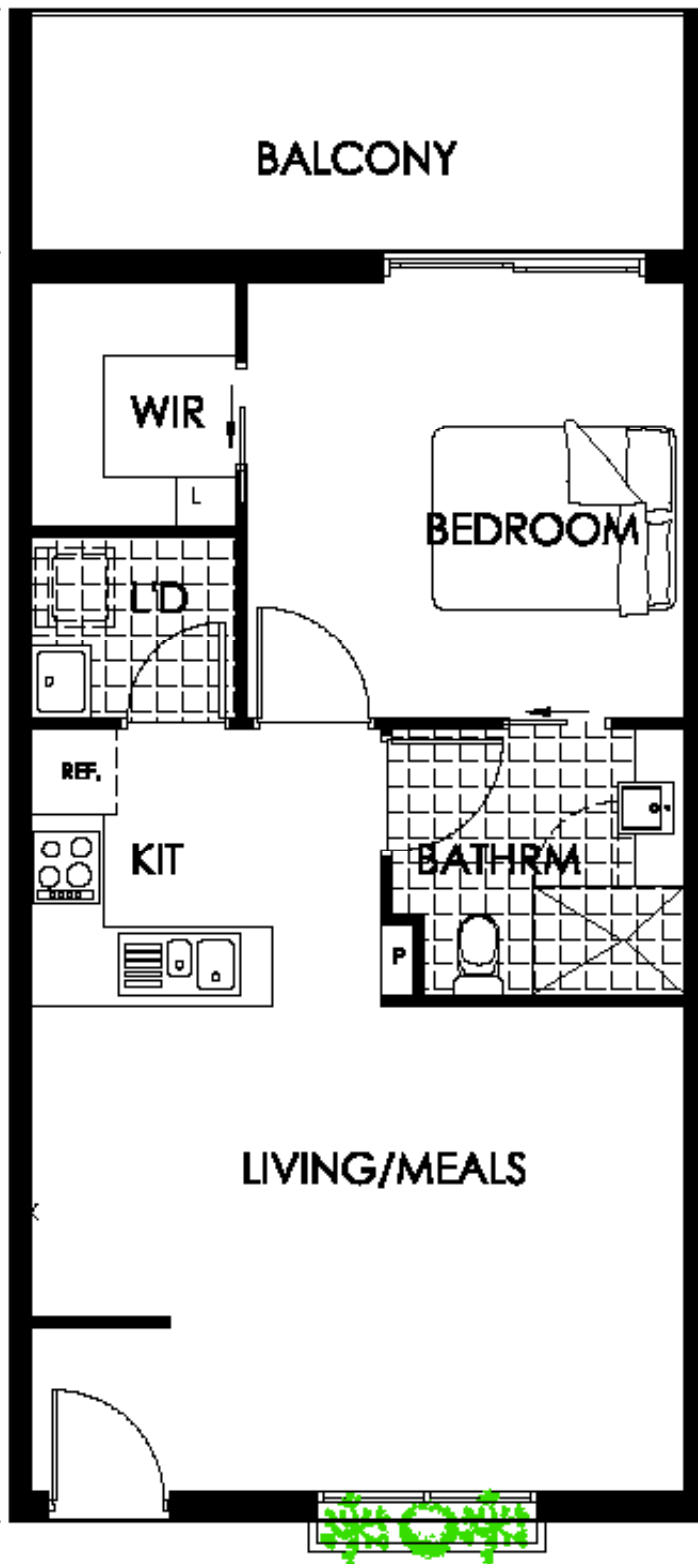
Outdoor barbecue area
- 

Onsite hairdressing salon
- 

Beautifully maintained gardens
- 

Vegetable garden





### Norfolk Apartments

#### Apartment 313

Bedrooms: 1

Bathrooms: 1

Carport: 1

Total size: 71m<sup>2</sup>

#### Villa features

Open plan living area

Walk-in wardrobes

Separate laundry

Two-way bathroom

Private balcony

Secure parking

#### Maintenance Fees

The current maintenance fee includes council rates, water rates, emergency services levy, insurance for public liability and buildings, management fees, public lighting, cleaning of all common areas, gardening of all common areas, general and preventative maintenance, 24 hour emergency call monitoring, onsite facilities and Village Management.

The maintenance fee excludes contents/chattels insurance, gas, electricity, private telephone, and the upkeep or replacement of all personal items (eg fridge, furniture and washing machine).

This document does not form part of a contract for sale or purchase of a license to occupy. While reasonable care has been taken in the preparation of this flier and all particulars contained herein are believed to be correct, interested parties must rely upon their own inspections and inquiries. Floorplans and photography are for presentation purposes and should be regarded as indicative only. All properties are subject to prior sale, change or withdrawal. Information, dimensions, prices and measurements are subject to change without notice. E&OE. Issued 1/5/19.



**KARIDIS RETIREMENT VILLAGES**  
BUILDING BETTER COMMUNITIES

Norfolk Apartments  
karidisretirementvillages.com.au