



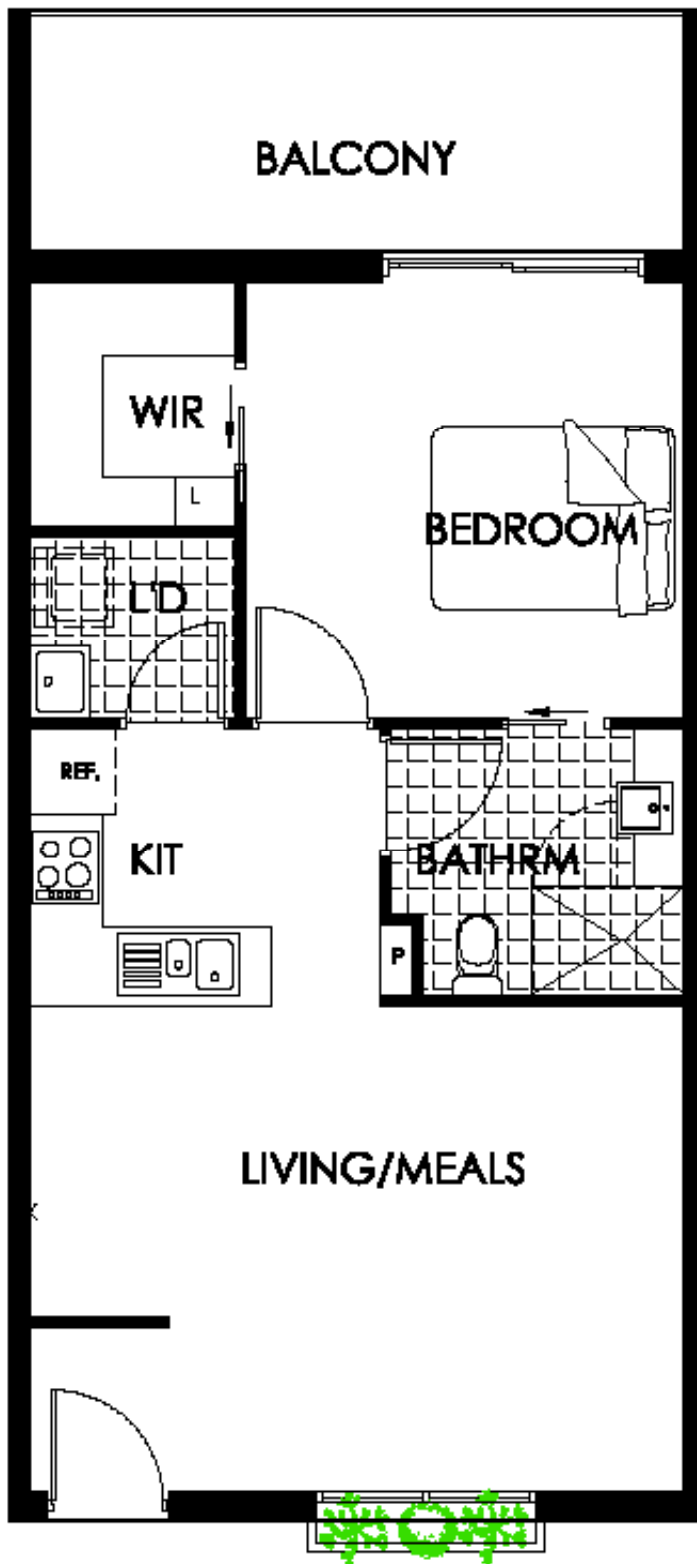
An established village with a close community spirit and an abundance of facilities and services on offer. Ideally located in the thriving suburb of Marion - Norfolk Estate is close to all of the key amenities you need to live a richly rewarding and enjoyable lifestyle.

- | | | | | |
|---|---|--|---|---|
| 
Community centre | 
Indoor swimming pool | 
Equipped gym | 
Indoor spa | 
Men's shed |
| 
Billiard table | 
Outdoor barbecue area | 
Onsite hairdressing salon | 
Beautifully maintained gardens | 
Vegetable garden |



KARIDIS RETIREMENT VILLAGES
BUILDING BETTER COMMUNITIES

Call us on 1300 796 311
karidisretirementvillages.com.au



Norfolk Apartments

Apartment 313

Bedrooms: 1
Bathrooms: 1
Balcony: 1
Carport: 1
Total size: 71m²

Villa Features

Open plan living area
Walk-in wardrobes
Separate laundry
Two-way bathroom
Secure parking
Lift access

Norfolk Estate Management

The Norfolk Estate Village Manager supervises the running of the complex, manages the maintenance and service personnel and is there to help make your life easier.

Monthly Maintenance Fee

Our simple monthly maintenance fee covers:

- 24-hour emergency call monitoring
- Gardening of all common areas
- Maintenance, repairs and cleaning of all communal facilities
- Maintenance of your home
- On-site facilities and estate management
- Insurance premiums for building and public liability for the whole village (excluding your contents)
- Council rates and water rates

Limited Out-of-Pocket Expenses

At Norfolk Estate, you have control over paying for items and services such as:

- Personal contents insurance
- Electricity and gas
- Upkeep or replacement of all personal items (eg. fridge, furniture and washing machine)

This document does not form part of a contract for sale or purchase of a license to occupy. While reasonable care has been taken in the preparation of this flier and all particulars contained herein are believed to be correct, interested parties must rely upon their own inspections and enquiries. Floorplans and photographs are for presentation purposes and should be regarded as indicative only. All properties are subject to prior sale, change or withdrawal. Information, dimensions, prices and measurements are subject to change without notice. E&OE. Issued February 2025.



KARIDIS RETIREMENT VILLAGES
BUILDING BETTER COMMUNITIES

Norfolk Apartments
karidisretirementvillages.com.au